

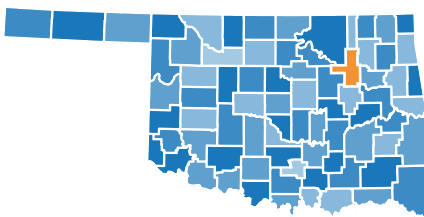
Take Action to Protect Tulsa County



Oklahoma currently ranks 43rd in the nation for meeting immunization requirements and protecting its children from preventable and deadly diseases. ¹

- An increasing number of parents are opting their children out of important, required immunizations for non-medical reasons. The exemption rates for Oklahoma schools have steadily increased in recent years.
- It's recommended that 95% of the population be immunized to reduce the spread of vaccine-preventable disease and optimize community immunity. ²

HOW DOES TULSA COUNTY COMPARE TO OKLAHOMA OVERALL IN TERMS OF KINDERGARTEN VACCINATION RATES?



91.5%
of Tulsa County is
Up-Date for All Vaccines

92.6%
of Oklahoma State is
Up-Date for All Vaccines

2.8%
Exemption Rate for
Tulsa County

2.2%
Exemption Rate for
Oklahoma State

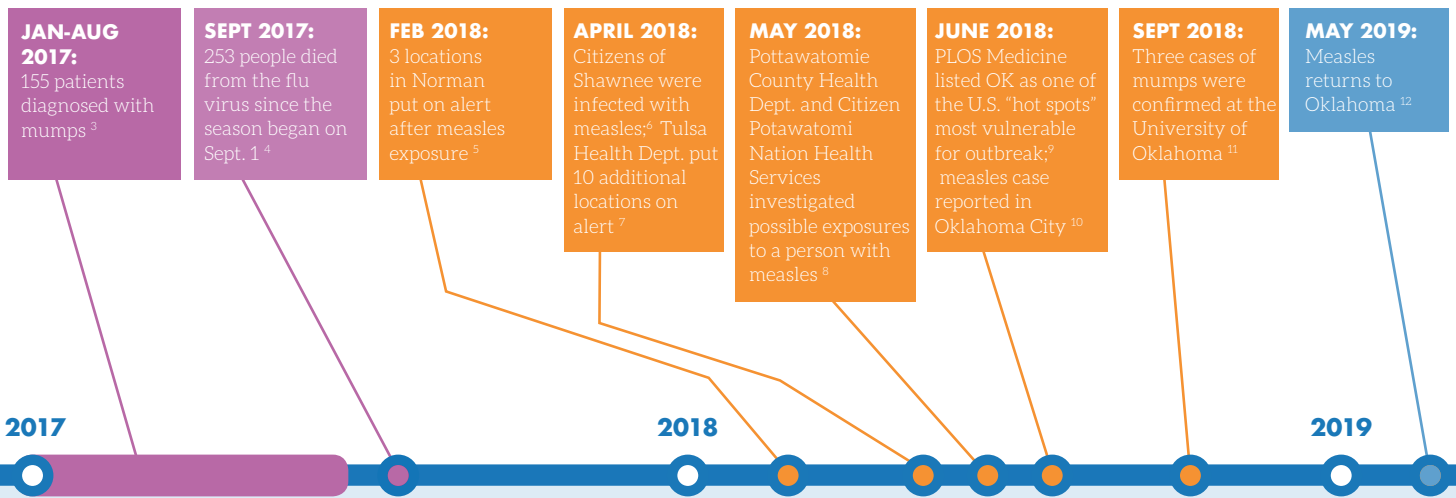
**VACCINES HELP PROTECT YOU,
YOUR FAMILY AND YOUR COMMUNITY.**

HERE'S WHAT YOU CAN DO:

- **Oppose** efforts to loosen current immunization requirements by contacting your state representative
- **Emphasize** the safety and effectiveness of vaccines in your conversations with friends, family and colleagues to help clarify common misconceptions
- **Educate** your community on the importance of vaccinations and receiving them on time
- **Support** local public health measures to lower the exemption rates across the state

The Oklahoma Alliance for Healthy Families is a statewide coalition of public health experts and parents with the goal of improving the health of our schools, communities and families through education and advocacy.

OKLAHOMANS ARE INCREASINGLY AT RISK OF VACCINE-PREVENTABLE DISEASES

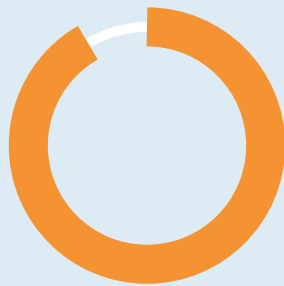


OKLAHOMA CITIZENS OVERWHELMINGLY SUPPORT VACCINATIONS.



90%

believe it is important to receive vaccines on time and according to guidelines



91%

believe vaccines are effective when received as directed



82%

believe the benefits of vaccines outweigh the risks¹³

¹ <https://assets.americashealthrankings.org/app/uploads/ahrannual-2018.pdf>

² <https://www.who.int/bulletin/volumes/86/2/07-040089/en/>

³ <https://kfor.com/2017/08/25/155-confirmed-cases-oklahoma-still-feeling-the-effects-of-mumps-outbreak/>

⁴ www.enidnews.com/oklahoma/news/experts-warn-of-second-flu-outbreak/article_b4d6fa90-c046-5e3c-a6e4-2b24b1d32fe2.html

⁵ <https://www.kxii.com/content/news/Oklahoma-State-Department-of-Health-confirms-measles-case-473837923.html>

⁶ <https://kfor.com/2018/05/07/so-far-more-than-76-people-identified-exposed-to-shawnee-measles-outbreak/>

⁷ https://www.tulsaworld.com/news/health/measles-case-being-investigated-in-tulsa-health-department-alerts-people/article_6a0bd8da-a435-5dbb-95e9-259375cc0109.html

⁸ <https://content.govdelivery.com/accounts/OKSDH/bulletins/1ee9b07>

⁹ <https://journals.plos.org/plosmedicine/article?id=10.1371/journal.pmed.1002578>

¹⁰ <https://kfor.com/2018/10/17/health-officials-oklahoma-child-diagnosed-with-rare-polio-like-illness/>

¹¹ https://www.normantranscript.com/news/osdh-confirms-mumps-cases-at-ou/article_3d41f082-bb5e-11e8-8f08-4323c6c789d6.html

¹² <https://www.koco.com/article/measles-confirmed-in-oklahoma-what-you-need-to-know-about-the-virus/27492957>

¹³ Edelman Intelligence Survey Data, November 2018

It's time to take action and protect our communities.

OKHealthyFamily.org



@OKHealthyFam

