

Protect the Health of Oklahoma's Workforce



Many Oklahoma adults—the lifeblood of our workforce—remain unvaccinated, and the state currently ranks 47th in the nation for overall health.¹

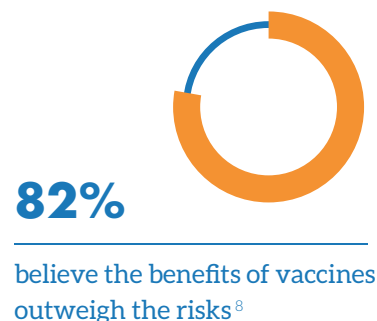
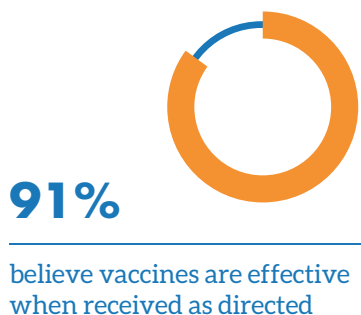
- In order to prevent a disease from spreading, it is recommended that 93-95% of a population be vaccinated.²
 - o In 2016, just 33.9% of Oklahoma adults age 18 and up had received their TDAP (tetanus, diphtheria and pertussis) vaccinations as recommended.³
 - o That same year, just 34.5% of Oklahoma adults ages 18 to 64 who were at increased risk for pneumonia received the pneumococcal vaccine according to standard guidelines.⁴
 - o The 2016-17 flu season was the second-deadliest of all time in Oklahoma, with 110 total fatalities.⁵
 - o During the 2016-17 flu season, there were 715 hospitalizations and 28 deaths among adults ages 18-64 in Oklahoma.⁶

UNIT COSTS PER CASE OF VACCINE-PREVENTABLE DISEASE BY COST COMPONENT AND BY PATHOGEN USED IN COST-OF-ILLNESS MODEL, 2015 ⁷

PATHOGEN	INPATIENT PRODUCTIVITY LOSS PER PERSON	OUTPATIENT PRODUCTIVITY LOSS PER PERSON
PNEUMOCOCCAL DISEASE	\$348	\$48
HERPES ZOSTER	\$295	\$54
MEASLES	\$212	\$29
PERTUSSIS	\$200	\$29
HPV	\$195	\$154
INFLUENZA	\$132	\$24
SOURCE	<i>NIS and DOL</i>	<i>MEPS and DOL</i>

*HPV is human papillomavirus. NIS is Nationwide Inpatient Sample. MEPS is Medical Expenditure Panel Survey. DOL is Department of Labor.

OKLAHOMA CITIZENS OVERWHELMINGLY SUPPORT VACCINATIONS



The Oklahoma Alliance for Healthy Families is a statewide coalition of public health experts, medical professionals and parents with the goal of improving the health of our schools, communities and families through education and advocacy.

IMMUNIZATION SUPPORTS HEALTHY OKLAHOMA BUSINESSES



Every dollar spent on childhood immunizations results in \$44 in economic benefits. That includes saving money that a family loses when a child is sick and a parent cannot work.⁹



The cost in loss of work resulting from influenza alone each year is about \$87 billion in the U.S.¹⁰ These expenses also drive¹¹ the cost of health insurance up for businesses.



Many diseases' incubation periods can cause people to be contagious—often without knowing they're even infected—for weeks, further allowing the disease to spread.¹²



The January 2019 measles outbreak in Washington cost the state at least \$1 million, which is about the average cost of a measles outbreak to a state.¹³



It's not just about quality and preservation of life. When employees are healthy, business is better. Widespread immunization can help Oklahoma improve its overall health ranking, as well as help it operate at a higher caliber for economic growth, innovation and job creation.

OKLAHOMANS ARE INCREASINGLY AT RISK OF VACCINE-PREVENTABLE DISEASES

HERE'S WHAT YOU CAN DO:

- ENCOURAGE** your coworkers to get vaccinated by sharing flyers, emails and other informational materials that explain the benefits
- INCENTIVIZE** immunization among your employees—for example, consider hosting a flu shot clinic in the fall with rewards for employees who attend
- EMPHASIZE** the safety and effectiveness of vaccines in your conversations and internal communications with colleagues to help clarify common misconceptions
- SUPPORT** local public health measures to lower exemption rates across the state—partner with other businesses or local health organizations to spread the word about community immunity
- JOIN** the Oklahoma Alliance for Healthy Families and partner with other local experts, professionals and thought leaders in your area

IT'S TIME TO TAKE ACTION AND BOOST BOTH OUR BUSINESSES AND OUR HEALTH.

¹ <https://assets.americashealthrankings.org/app/uploads/ahrannual-2018.pdf>

² https://www.who.int/immunization/sage/meetings/2017/october/2_target_immunity_levels_FUNK.pdf

³ <https://www.cdc.gov/vaccines/imz-managers/coverage/adultvaxview/data-reports/general-population/reports/2016.html>

⁴ <https://www.cdc.gov/vaccines/imz-managers/coverage/adultvaxview/data-reports/general-population/reports/2016.html>

⁵ https://www.tulsaworld.com/news/health/flu-season-ends-as-second-deadliest-in-oklahoma-with-fatalities/article_954c52c4-0936-5aa9-ba70-114ed06b664f.html

⁶ https://www.ok.gov/health/Organization/Office_of_Communications/News_Releases/2017_News_Releases/County_Health_Departments_to_Begin_Flu_Clinics_Oct_2.html

⁷ <https://www.healthaffairs.org/doi/full/10.1377/hlthaff.2016.0462>

⁸ Edelman Intelligence Survey Data, November 2018

⁹ <https://www.healthaffairs.org/doi/10.1377/hblog20170221.058855/full/>

¹⁰ <https://www.vaccinateyourfamily.org/join-us-in-support-of-vaccines/make-a-national-impact/state-of-the-immunization-report/>

¹¹ <https://www.ncbi.nlm.nih.gov/pmc/articles/PMC4896801/>

¹² <https://www.vaccinateyourfamily.org/join-us-in-support-of-vaccines/make-a-national-impact/state-of-the-immunization-report/>

¹³ <https://www.seattletimes.com/seattle-news/health/cost-of-washingtons-measles-outbreak-tops-1-million-expected-to-climb-higher>

